

## The Beginning...



Copyright 2013, INCONTROL Simulation Solutions, all rights reserved



1

## Summary of Common Issues

- Lack of communication across organizations & stakeholders
- Insufficient training programs
- Facility designs/layouts
- Developing/exercising emergency plans
- Crowd management and evacuations
- Screening process (persons, bag checks)
- Weather concerns
- Expectations for fans/attendee conduct
- Lack of resources
- Gap between schools and local communities

Copyright 2013, INCONTROL Simulation Solutions, all rights reserved



3

## Interscholastic Athletic and After-School Activities

- 11 million boys and girls participate in interscholastic athletics and after school activities
- 336 million fans attended high school games in football and boys and girls basketball

Copyright 2013, INCONTROL Simulation Solutions, all rights reserved



2

## Why?

- Plan creation challenged by:
  - SDMF Superintendent
  - MFPD Chief & MFFD Chief
    - MFPD Captain Terry Hanson reached out to largest three football complexes in WI for plans
  - Paper plan created with assistance of Michigan AD Association
  - Directors of SDMF challenged by Superintendent to streamline processes with Green Belt Six Sigma Certifications
    - Rockwell
    - Regal Systems
    - Sport Evac

Copyright 2013, INCONTROL Simulation Solutions, all rights reserved



4



## Six Sigma Green Belt Project Objective

- What is the business case for working on this project?
  - The School District of Menomonee Falls did not have a formal document outlining the processes for event evacuation. This project will create a detailed plan with a simulated evacuation to quickly and safely remove people from potential harm.
- What is the objective of the team?
  - The team is seeking processes to streamline spectators from events in a safe and timely fashion.
- What would success look like?
  - A successful evacuation would include ZERO injuries/fatalities in a timely fashion



Copyright 2013, INCONTROL Simulation Solutions, all rights reserved

5

## Potential Savings

- Hard savings
  - Reduction of Event workers
- Soft savings
  - Insurance rating from catastrophic events and possible injuries/fatalities
  - Cost Avoidance of Insurance Premium for 3+ years
  - Increase confidence of event staff with a plan in hand



Copyright 2013, INCONTROL Simulation Solutions, all rights reserved

7

## Project Goal(s)

- Phase I
  - MFHS Gymnasium (Capacity 1,500) 3 minutes or less
  - Schumann Stadium (Capacity 3,200+) 5 minutes or less
  - MFHS Soccer Stadium (Capacity 1,000+) 3 minutes or less
- Phase II
  - MFHS Auditorium (Capacity 800) 3 minutes or less
  - MFHS Tennis Courts (Capacity 300) 2 minutes or less
  - MFHS Pool (Capacity (500) 2 minutes or less
- Phase III
  - MFHS Full Evacuation during the school day
- Phase IV
  - MFHS Safety and Emergency Shutoff Locations



Copyright 2013, INCONTROL Simulation Solutions, all rights reserved

6

## Original Evacuation Plan



Copyright 2013, INCONTROL Simulation Solutions, all rights reserved

8



## Updated Evacuation Plan

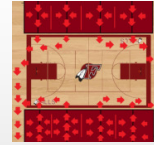
[www.FallsAthletics.org/EAP](http://www.FallsAthletics.org/EAP)



Copyright 2013, INCONTROL Simulation Solutions, all rights reserved

9

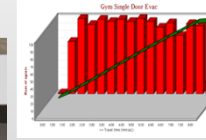
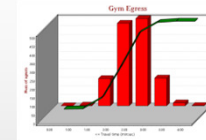
## Gym Evacuation – Egress and Fire Evacuation



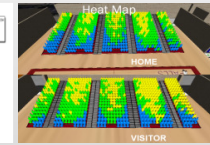
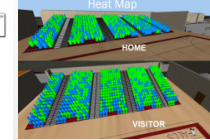
Before – paper plan



Fire Evac Gym



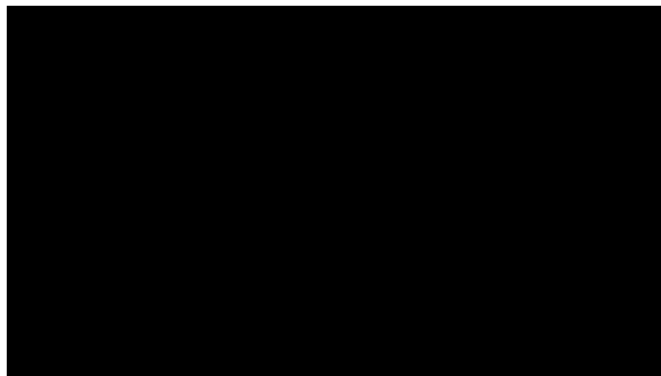
After – “what if” analysis of normal egress and fire evacuation scenarios



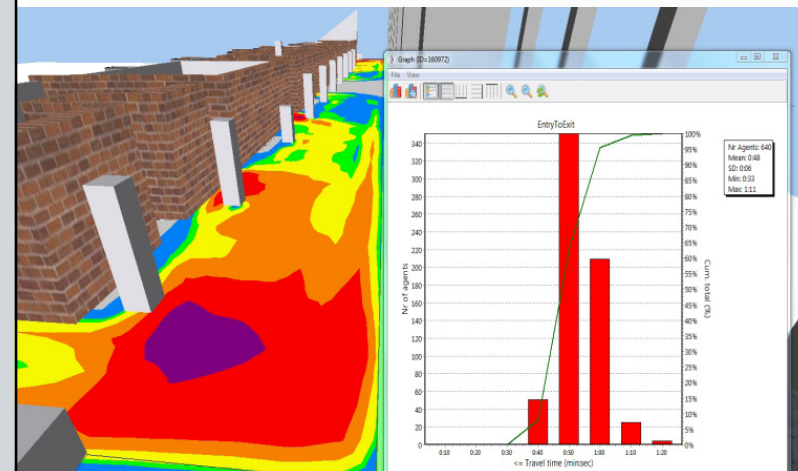
Copyright 2013, INCONTROL Simulation Solutions, all rights reserved

11

## MFHS SportEvac



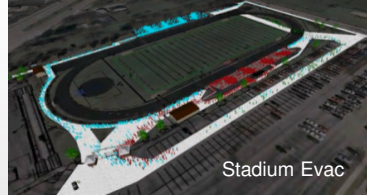
## Data Analysis Reports and Playback



### Stadium Fire and Weather Evacuation



Before – paper plan



Stadium Evac

After – “what if” analysis of fire and weather evacuation scenarios

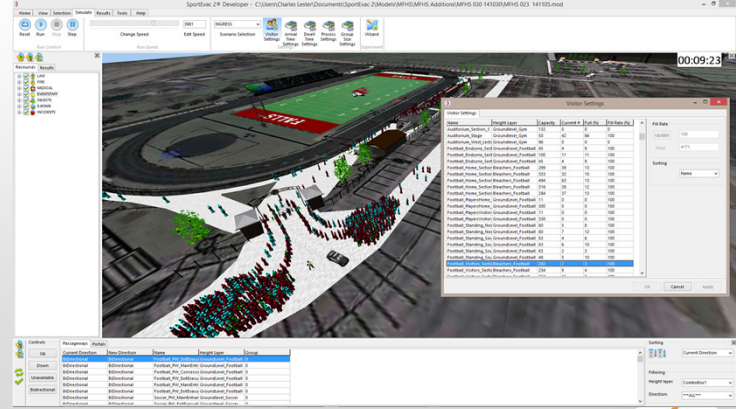


Weather Evac to Shelter

Copyright 2013, INCONTROL Simulation Solutions, all rights reserved

13

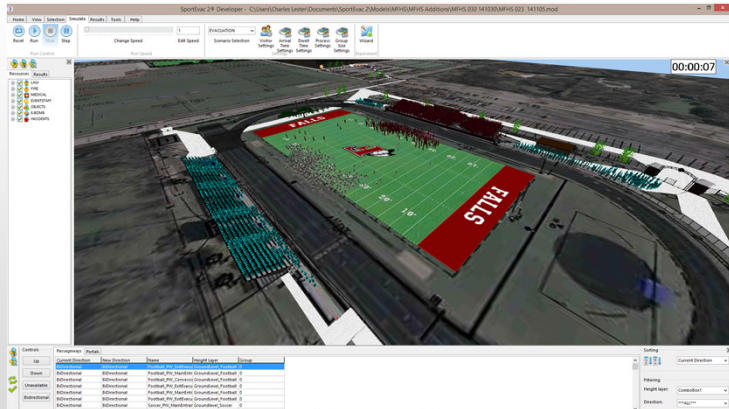
### State-of-art Crowd Flow Simulation



Copyright 2013, INCONTROL Simulation Solutions, all rights reserved

15

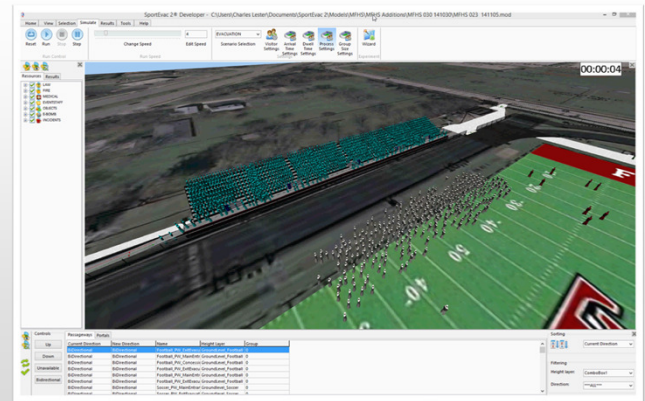
### Comprehensive Integration GUI



Copyright 2013, INCONTROL Simulation Solutions, all rights reserved

14

### E-bomb Card Impact analysis



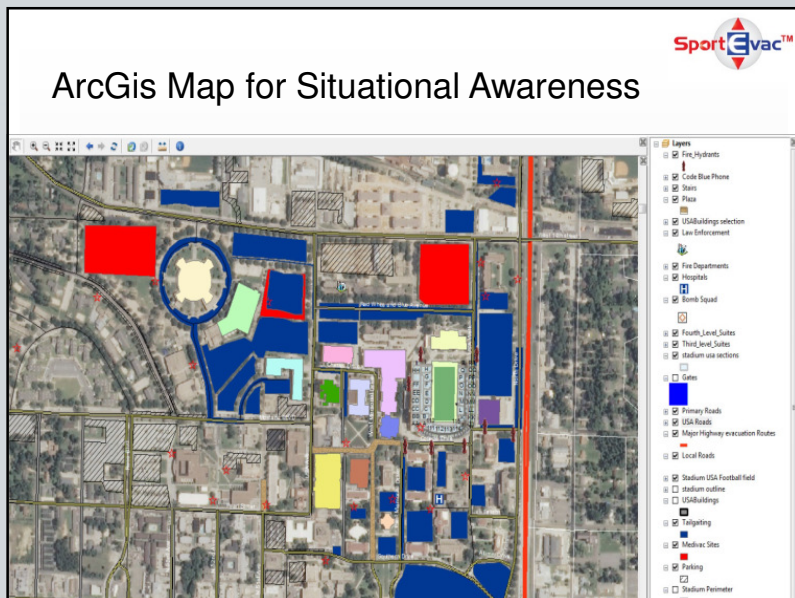
Copyright 2013, INCONTROL Simulation Solutions, all rights reserved

16





**Rick Fechter**  
 Manager of Facilities and Operations  
 School District of Menomonee Falls



#### Custodial After School/Weekend Procedures

##### Schedule proper personnel

- Staff with experienced workers
- Properly trained personnel
- Flex work schedules

##### Develop emergency contact list

##### Ensure accurate facility usage schedule

##### Contact user groups in advance

##### Provide excellent level of customer service




Floor Plan - Assigned Numbers and Names

**MFHS Emergency Shut Off**  
Locations, procedure and training

### What works

- Networking police and school districts
- Officers, EMS, Fire – tour of facilities
- Card Access/Key Entry for all buildings
- Card Access/Key Entry for front line squads
- Demographics of all emergency shut offs
- Meet with school staff on evacuation routes/plans
- Challenge staff members with alternative plan
- Run drills from various points in the building

 **Jay Weber**  
School Resource Officer  
Menomonee Falls Police Department

### Active Shooter

- Lock Down vs. Escape Route
- Proper tools in schools to stop the threat
- AR-15/Gun Safety
- Gun Training for School Staff
- Meetings with School Staff
  - Weekly with building administration
  - Monthly with district SRO, PD administration, and school admin.



## Questions ???

- Ryan Anderson – 262.255.8497  
[anderya@sdmfschools.org](mailto:anderya@sdmfschools.org)
- Rick Fechter – 262.255.8446  
[fechric@sdmfschools.org](mailto:fechric@sdmfschools.org)
- Charles Lester - 601.266.6174  
[Charles.Lester@incontrolsim.com](mailto:Charles.Lester@incontrolsim.com)
- Jay Weber – 262.250.6484  
[webejay@sdmfschools.org](mailto:webejay@sdmfschools.org)



Copyright 2013, INCONTROL Simulation Solutions, all rights reserved

25

